

This drawing remains Drivetrain Sweden AB's property and is loaned subject to the condition that it is not to be copied, reproduced or distributed either in whole or part and is not to be used directly or indirectly in any way detrimental to our interests. (Any violation will be prosecuted according to the law.)

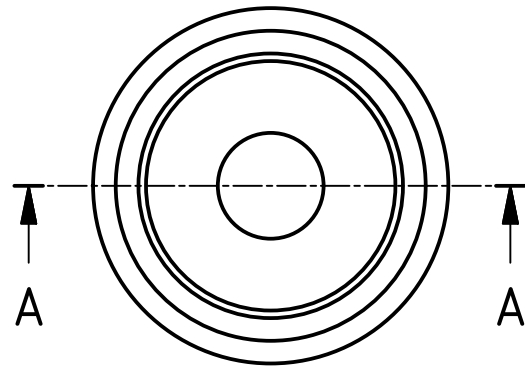
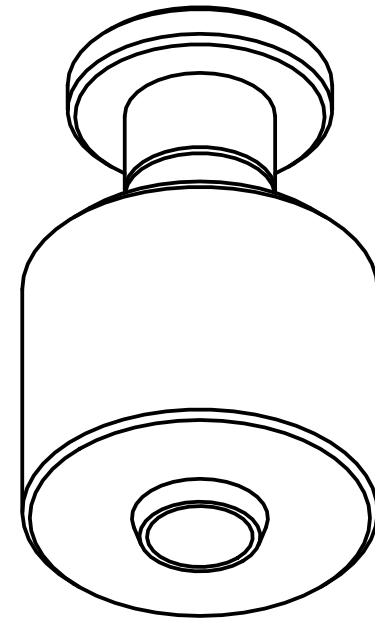
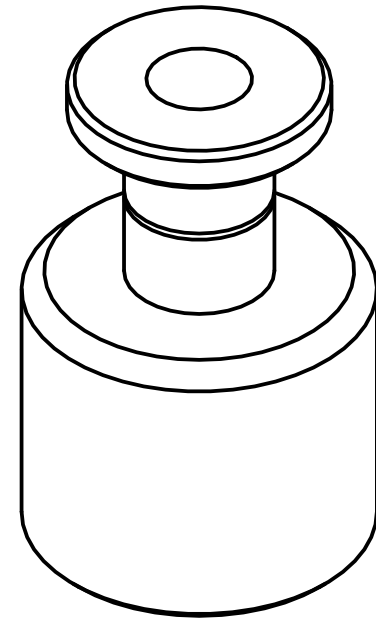
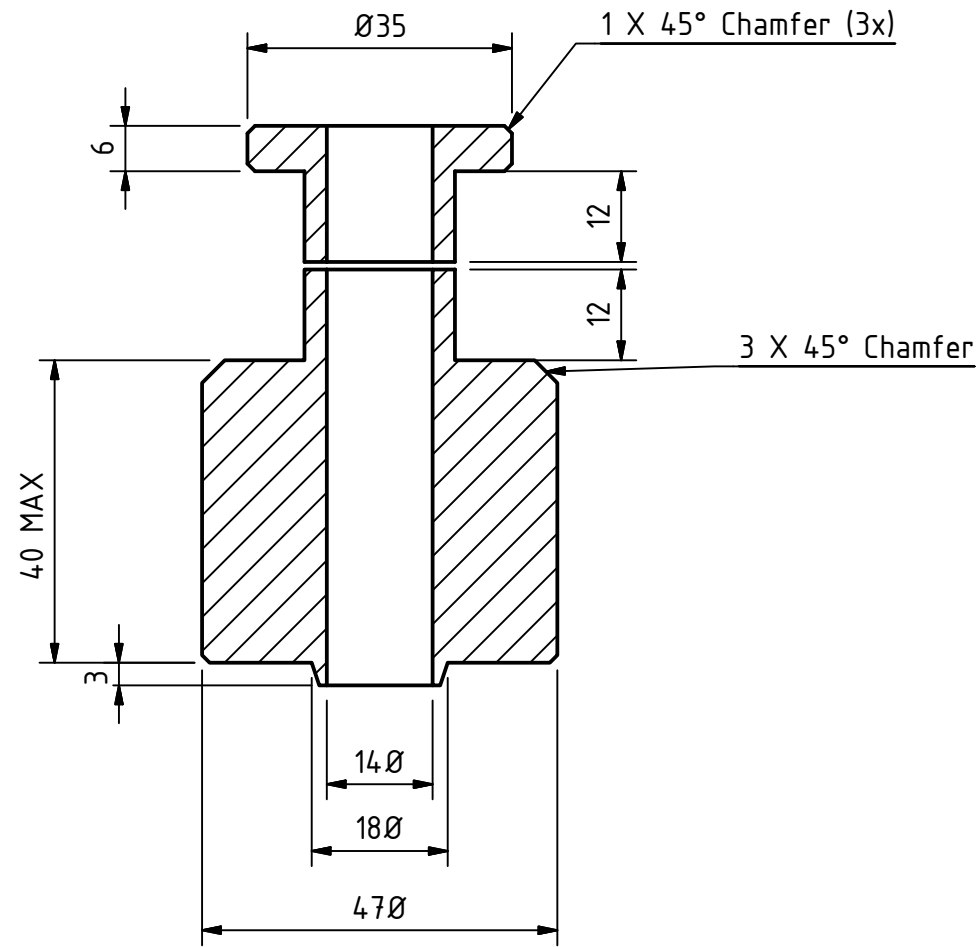
Diese Zeichnung verbleibt Drivetrain Sweden AB's Eigentum und darf nicht ohne unsere Erlaubnis kopiert, gezeigt oder ausgegeben an Konkurrenzfirmen oder sonst unbefugten Personen werden. (Übertretung wird auf das geltende recht gestützt.)

Denna ritning förblir Drivetrain Sweden AB's egendom och får icke utan vårt medgivande kopieras visas eller utlämnas till konkurrensfirmor eller andra obehöriga personer. (övertredelse beivras med stöd av gällande lag.)

1 2 3 4 5 6

A

A-A (1 : 1)



C

D

A

B

C

D

	2015-09-03 Date	Information: Sharp edges to be dressed Surface roughness: Ra 3,2µm	Unless specified the following is valid Machined surfaces: ISO 2768-mK Unmachined surfaces: ISO 2768-cl	Part of:	
	ME Drawn by	Nissan Patrol Parallelstagg Höjningshylsor		Total Weight: kg	Scale: 1 : 1
Checked	Approved			Drawing sheet: 1 / 1	Format: A3
				Drawing No.	Revision

1 2 3 4 5 6